

# Dredging consultancy

## Introduction

Royal IHC's dredging consultants have access to the company's unrivalled knowledge and dredging expertise. With over 70 years of extensive theoretical knowledge and operational experience, our team of experts are capable of providing a broad range of advisory services throughout the entire life-cycle of both your dredging projects and equipment.



## Mission

This knowledge and experience enables us to fulfill our mission: to provide you with support in the preparation, operational use and optimisation of your dredging equipment and projects through world-class advisory services.

## Added value

- extensive experience in the dredging industries
- in-house specialists with operational and technical know-how
- partner of choice for the leading companies and authorities in the industry.

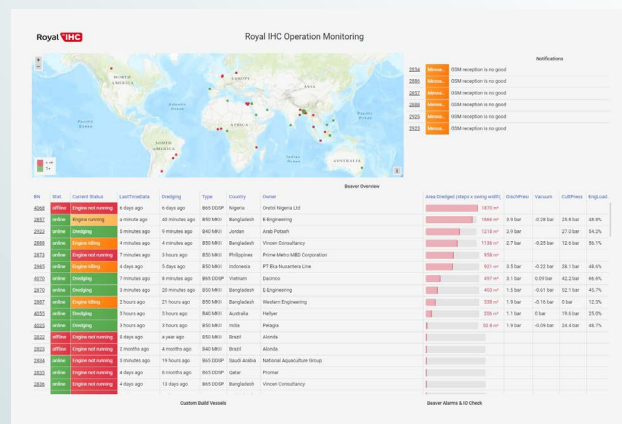


## Royal IHC's areas of expertise

Projects, equipment and people – this is what dredging comes down to. It is a challenge, even for experienced contractors, to find the right balance between the scope and constraints of a dredging project; the specification of the equipment being used; and the competences of the people involved. All of our consultancy services are based on these three pillars, which combined determine the profitability of your operation.

### For more information:

dredgingconsultants@royalihc.com



# 01 Projects

## Exploration

- business case OPEX
- exploitation analysis
- feasibility analysis
- workability and risk analysis
- stakeholder management.

## Preparation

- soil and site survey
- soil sampling and analysis
- equipment selection
- working method analysis
- production and cost calculations
- detailed project plan and planning
- contract preparation and procurement.

## Implementation

- project management support
- real-time data monitoring and analysis
- operations monitoring
- on-site operational support/remote assistance (24/7)
- project management and supervision
- expert witness and dispute resolution.

## Evaluation

- in-depth data analysis
- optimisation studies
- benchmarking studies.

# 02 Equipment

## Exploration

- market potential analysis
- business case CAPEX.

## Maintenance

- planned maintenance services
- spare parts management
- repairs and docking management.

## Upgrade

- life-cycle analysis
- equipment performance analysis and benchmarking
- equipment optimisation studies
- advise on renovations
- up to date knowledge of latest R&D innovations.

# 03 People

- crewing/staff competence assessment
- coaching and training.